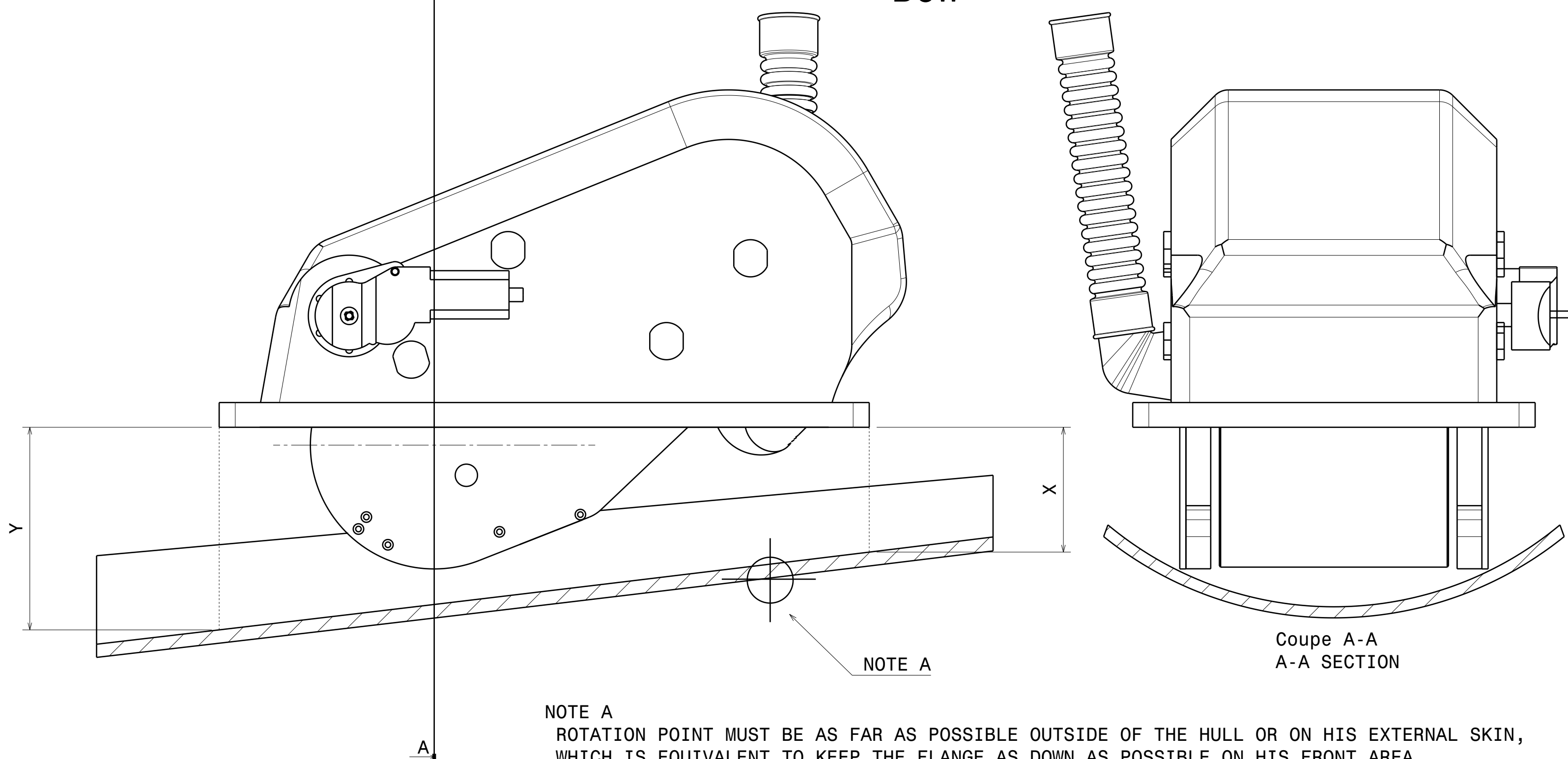


1/ POSITIONNING

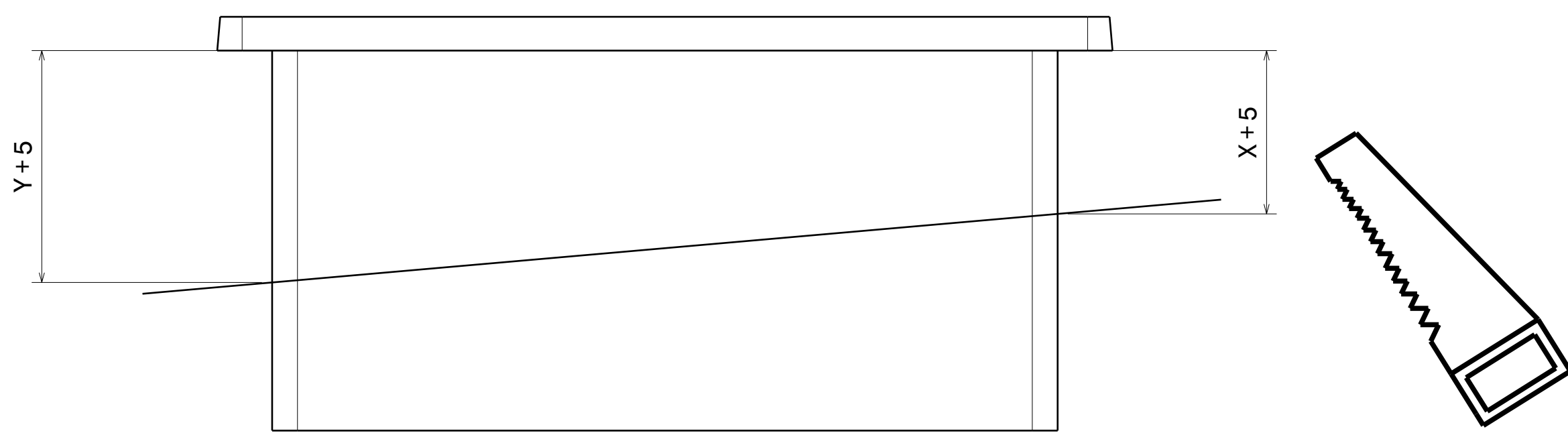
STERN

BOW



NOTE A
 ROTATION POINT MUST BE AS FAR AS POSSIBLE OUTSIDE OF THE HULL OR ON HIS EXTERNAL SKIN, WHICH IS EQUIVALENT TO KEEP THE FLANGE AS DOWN AS POSSIBLE ON HIS FRONT AREA.
 LE POINT DE ROTATION DOIT ETRE DANS LA LIMITE DU POSSIBLE A L'EXTERIEUR DE LA COQUE OU SUR SA PEAU EXTERIEURE, CE QUI EQUIVAUT A ESSAYER DE GARDER LA BRIDE AUSSI BAS QUE POSSIBLE SUR SA PARTIE AVANT.

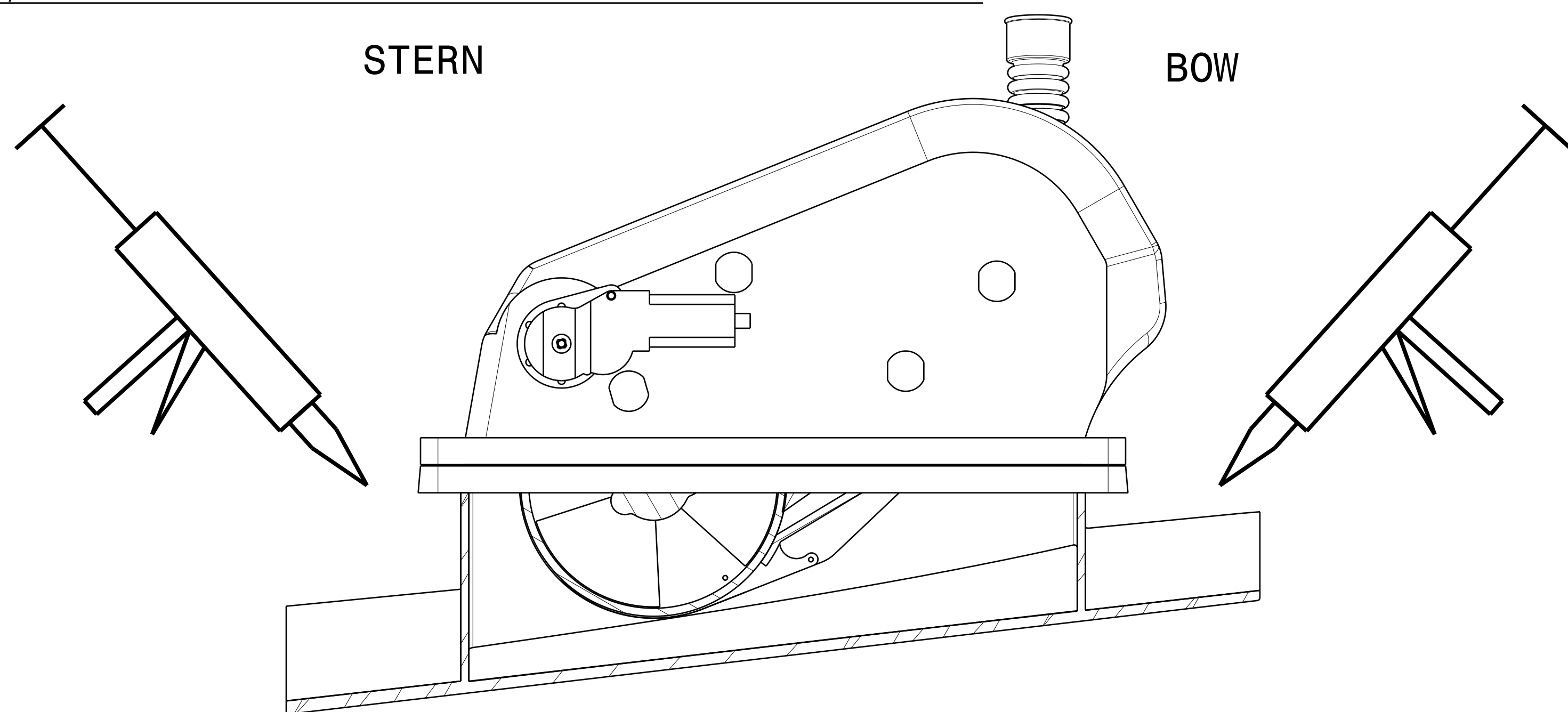
2/ CUTTING



3/ POINT JOINING AND CONTROL POSITIONNING OF THE THRUSTER

STERN

BOW

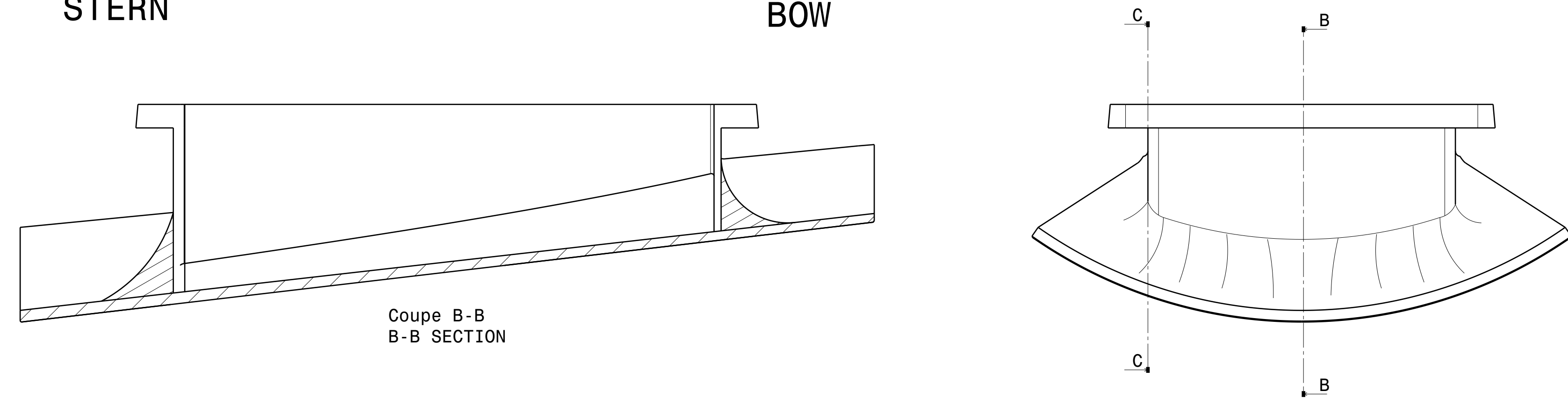


NOTE: AT THIS STEP, YOU MAY HAVE TO SAND THE INNER WALLS TO PERMIT THE THRUSTER REACH THE FLANGE

4/ STRATIFICATION

STERN

BOW

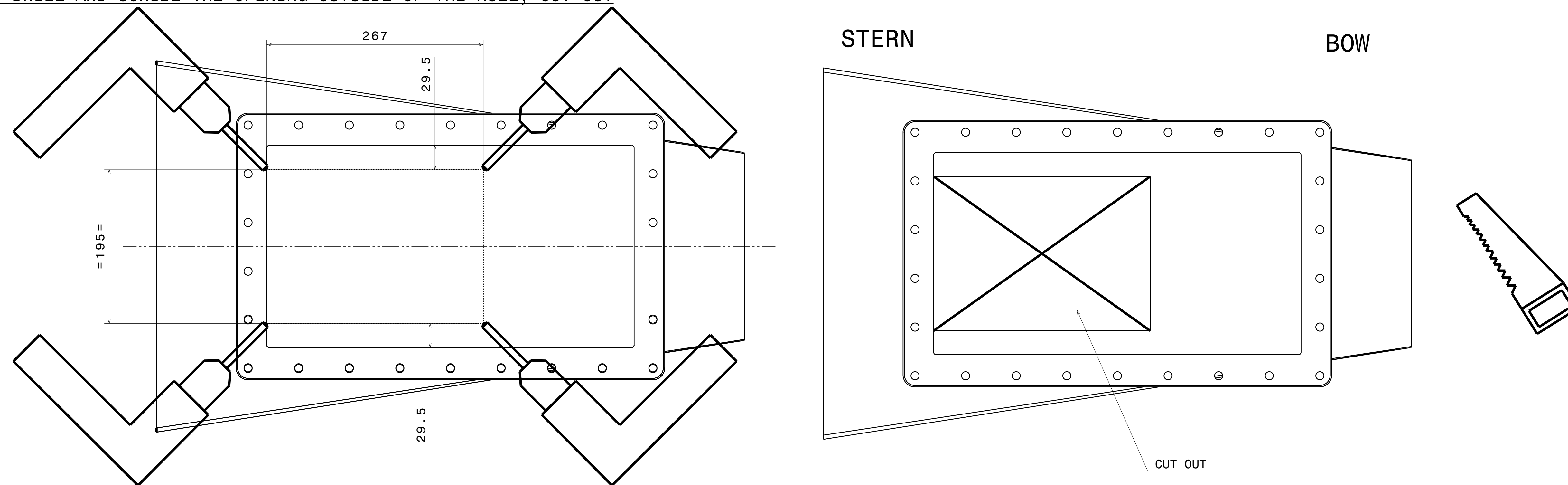


NOTE B : DO NOT STRATIFY IN THIS AREA (BOTH SIDES)

5/ DRILL AND SCRIBE THE OPENING OUTSIDE OF THE HULL, CUT OUT

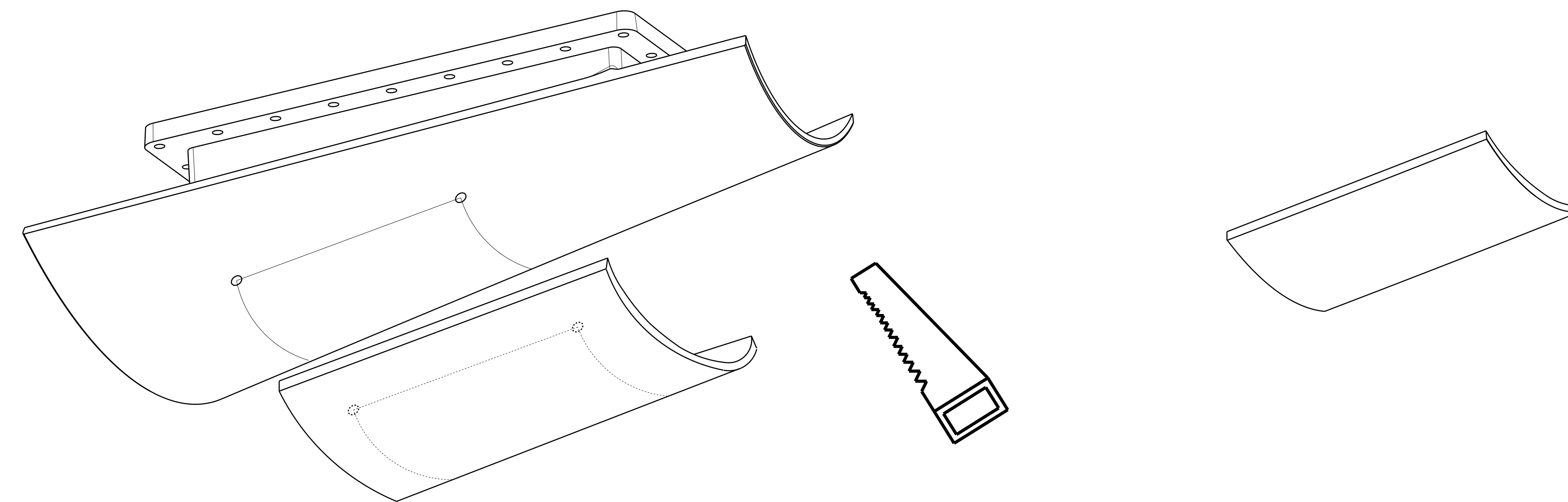
STERN

BOW

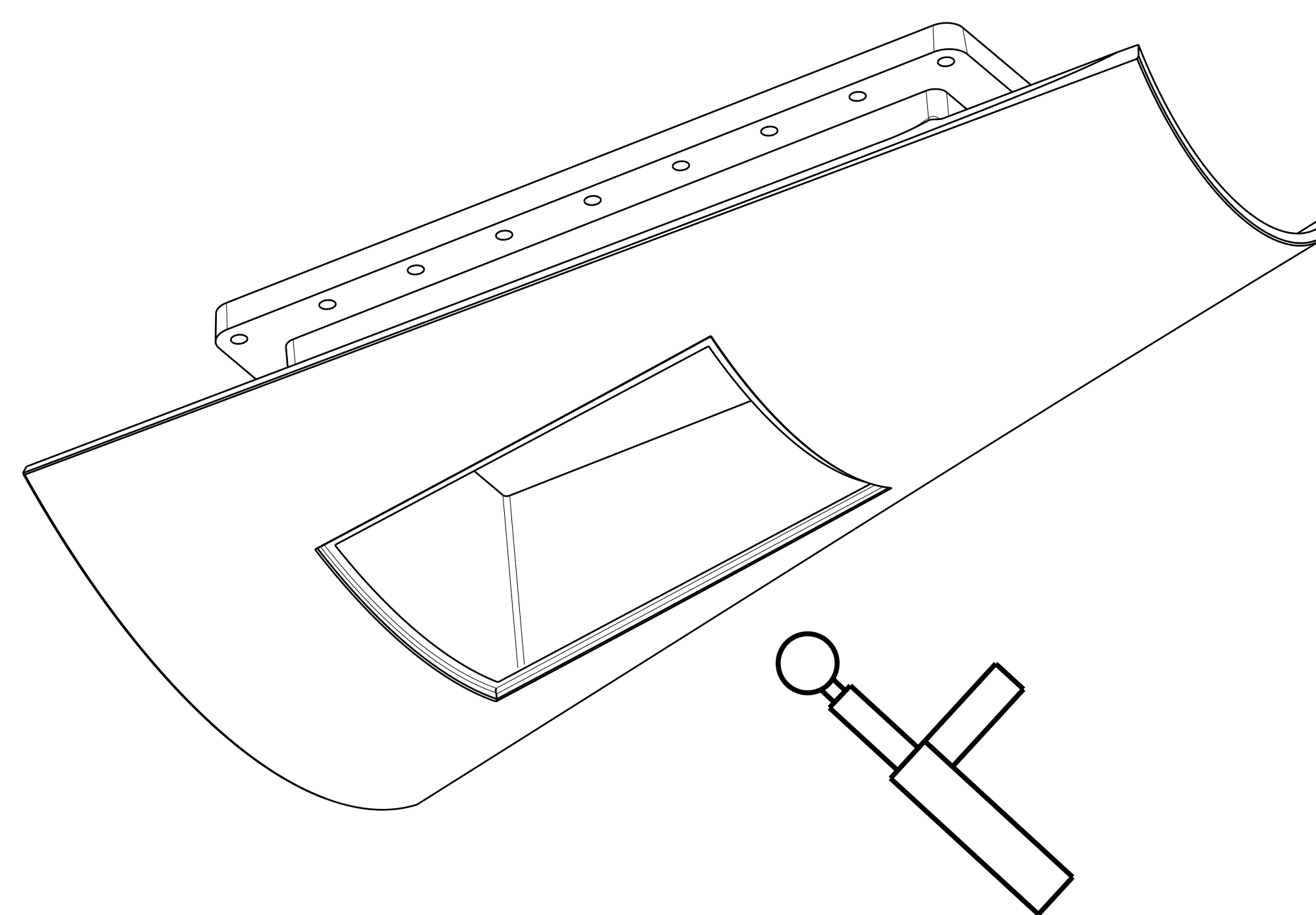


WARNING : DO NOT USE THE HULL CUT-OUT

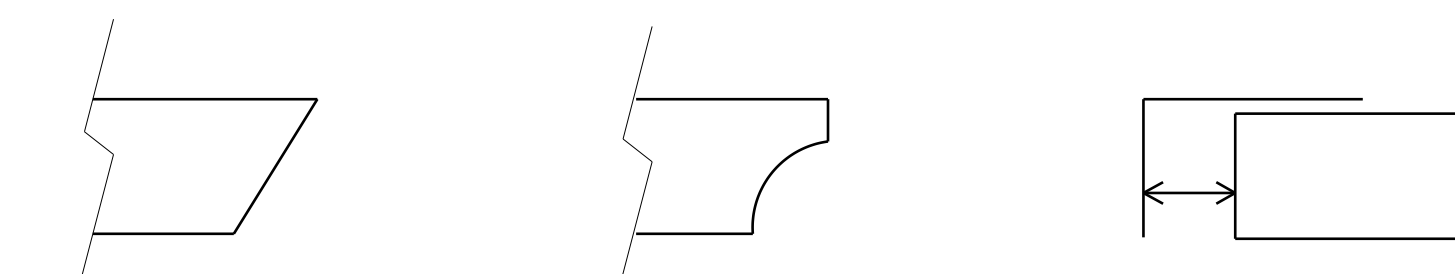
6/ COUNTERMOLD THE HULL AND CUT THE LOCKING DOOR



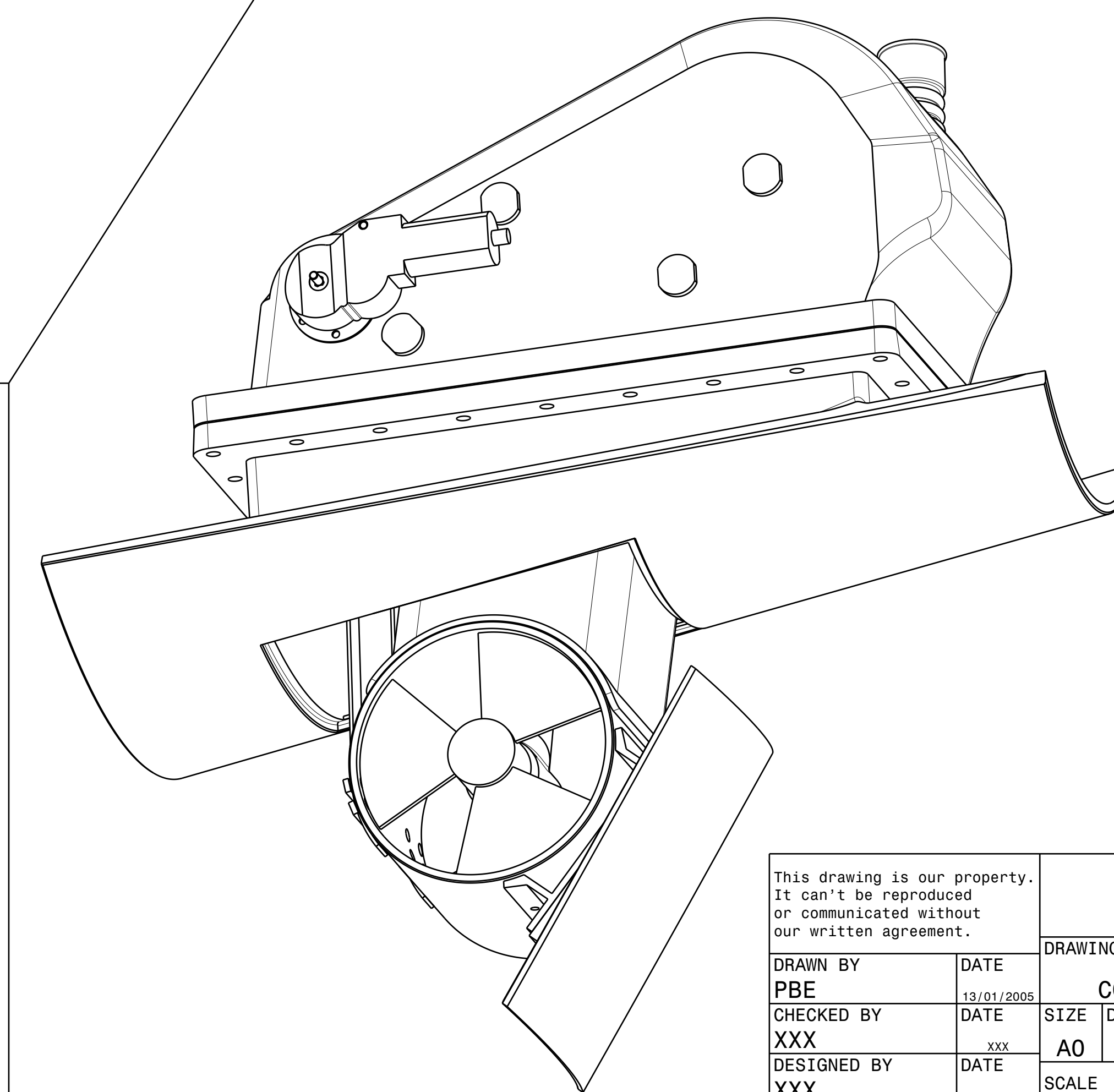
7/ MACHINE A REBATE ON THE HULL



DIFFERENT ALLOWED SHAPES :



8/ JOIN THE LOCKING DOOR



This drawing is our property. It can't be reproduced or communicated without our written agreement.

MAX POWER

DRAWN BY		DATE		DRAWING TITLE	
PBE		13/01/2005		COMPACT RETRACT INSTALLATION	
CHECKED BY		DATE		SIZE	
XXX		xxx		A0	
DESIGNED BY		DATE		DRAWING NUMBER	
XXX		xxx		MP 2005 CRI - 002	
		SCALE		WEIGHT(kg)	
		1:3		xxx	
		SHEET		1/1	